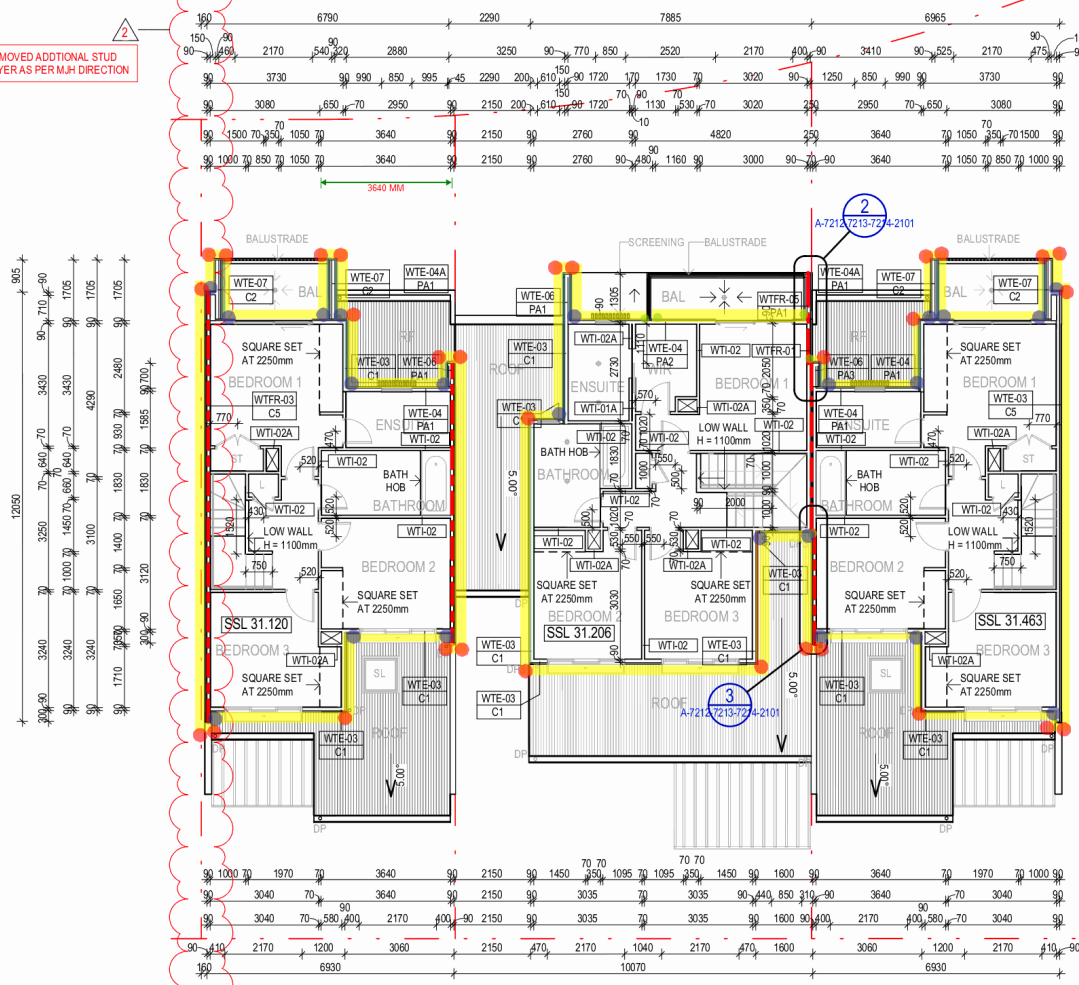


REMOVED ADDITIONAL STUD LAYERS PER MJH DIRECTION

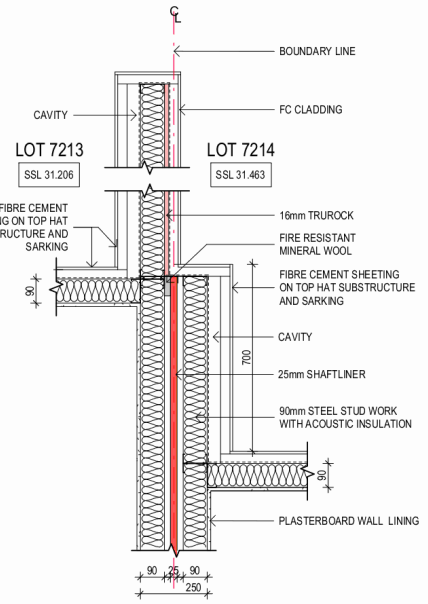


LOT 7212  
HOUSE TYPE D1  
REFER TO A-D-2000

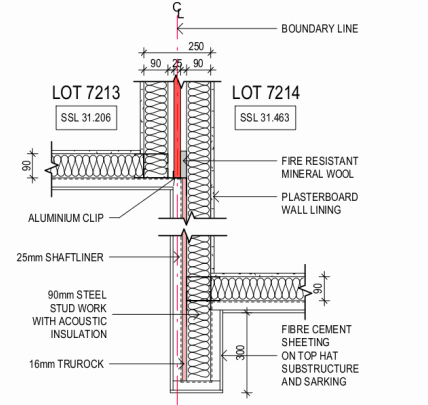
LOT 7213  
HOUSE TYPE C  
REFER TO A-C-2000

LOT 7214  
HOUSE TYPE D2  
REFER TO A-D-2000

1 LOTS 7212, 7213, 7214 - FIRST FLOOR - PARTITION PLAN  
1:150



2 LOTS 7212, 7213, 7214 L1 - DETAIL 1  
1:20



3 LOTS 7212, 7213, 7214 L1 - DETAIL 2  
1:20

- NOTES**
- Refer to Stockland Medium Density Housing Project Brief - Altrove Stage 7A for key design requirements and operational performance standards
  - Read the drawings in conjunction with FFE, Windows and Door Schedules, Structural Engineer and Services Engineer documentation.
  - All Parapet walls to have Capping and Flashing as required.
  - For columns and beams extend and further structural details refer to Structural Engineer documentation
  - Bathrooms and toilets in type B to follow LHD Silver.
  - Refer to A-4500 and Partition Plans A-2100 series for Wall Details
  - Window and Door Tags refer to House type Door and Window Schedules A-8000
  - Tile set out refer to detail drawings for House Types.
  - Cladding joint set out and approved by architect via shop drawings.
  - Dimensions - Floor plan dimensions refer to house type floor plan A-HouseType-2000
  - Dimensions - Unless otherwise shown, dimensions shown on drawings for internal walls always refer to the structure's dimensions. Structure means masonry and steel framing and does not include finishes such as plasterboard, render and skirtings. The internal room sizes will be different when thicknesses of internal finish materials are taken into account.
  - Gutters and Downpipes will refer to hydraulic engineer's drawings.
  - Roof covering materials shall be manufactured and fixed in accordance with the requirements of the NCC.
  - Floor Areas refer to House Type General Arrangement Plan
  - Refer to Interior drawings for Bathroom, Ensuite, Kitchen, Laundry and Powder room details.
  - Refer to Civil and Landscape drawings for Access path details and external levels.
  - Refer to House Type Elevations A-House Type-3000 series for external finishes.
  - No Mechanical Ventilation to Laundry
  - DB Location refer to Electrical Engineer's Drawings
  - Non-slip Finish to Stair
  - Pad Level shown on drawing as per survey received from MJH Multi.
- LEGEND**
- Beam Refer to Engineering Drawings
  - Floor Joist Refer to Engineering Drawings
  - Stack Provision - To Be Confirmed by Hydraulic Engineer
  - Columns. Refer to Engineer Drawings for details
  - Smoke Alarm
  - Tap
  - AC Provision
  - Air Conditioner
  - Clothesline
  - HWS
  - M/BOX
  - DP
  - DPS
  - NIB
  - RW.TAP
  - Lot Boundary Line
  - Fire Rated Wall 60/60/60 (Refer to A-4500 and A-2100 series for Wall Details and Specifications)
  - Wall Reinforcement - Refer to LHA Requirements
  - 820c
  - 820mm Clear Door Opening
  - # Lift Off Hinges Door
  - HR Handrail
  - FCU Fan Coil Unit
  - RAG Return Air Grille
  - GAS Gas Bayonet
  - MH Man Hole
  - EF Exhaust Fan
  - BL Balustrade
  - SL Skylight
  - NIB Nib Wall with Depth of Robe Shelf + 10mm
  - Recycled Water Tap

**ABS** Class 1 Building with Building

**5.5** Knowledge star rating

**NATIONWIDE HOUSE** PUBLIC TRUSTED SCHEM

**BASIX**

Certificate no.: 0000746380  
Assessor Name: Zoltan Lipovochi  
Accreditation no.: 20984  
Certificate date: 13 September 2016

Dwelling Address: unregistered Schofields, NSW 2782  
www.nathers.gov.au

Amendments

Issue	Description	Date
A	ISSUE FOR CONSTRUCTION CERTIFICATE	21/03/2018
B	ISSUE FOR CONSTRUCTION CERTIFICATE	11/04/2018
1	ISSUE FOR CONSTRUCTION	21/06/2018
2	ISSUE FOR CONSTRUCTION	06/07/2018

Consultant \_\_\_\_\_ Client \_\_\_\_\_ Project Title \_\_\_\_\_

**NOTE**  
WALL DETAILS REFER TO MANUFACTURERS - KNAUF FOR MORE DETAILS AND SPECIFICATION

**ISSUED FOR CONSTRUCTION**

Plotted and checked by	DC
Verified	DC Approved DC
Drawing Created (date)	01/16/18 Drawing Created (by) VP
Scale	Project No Drawing No Issue